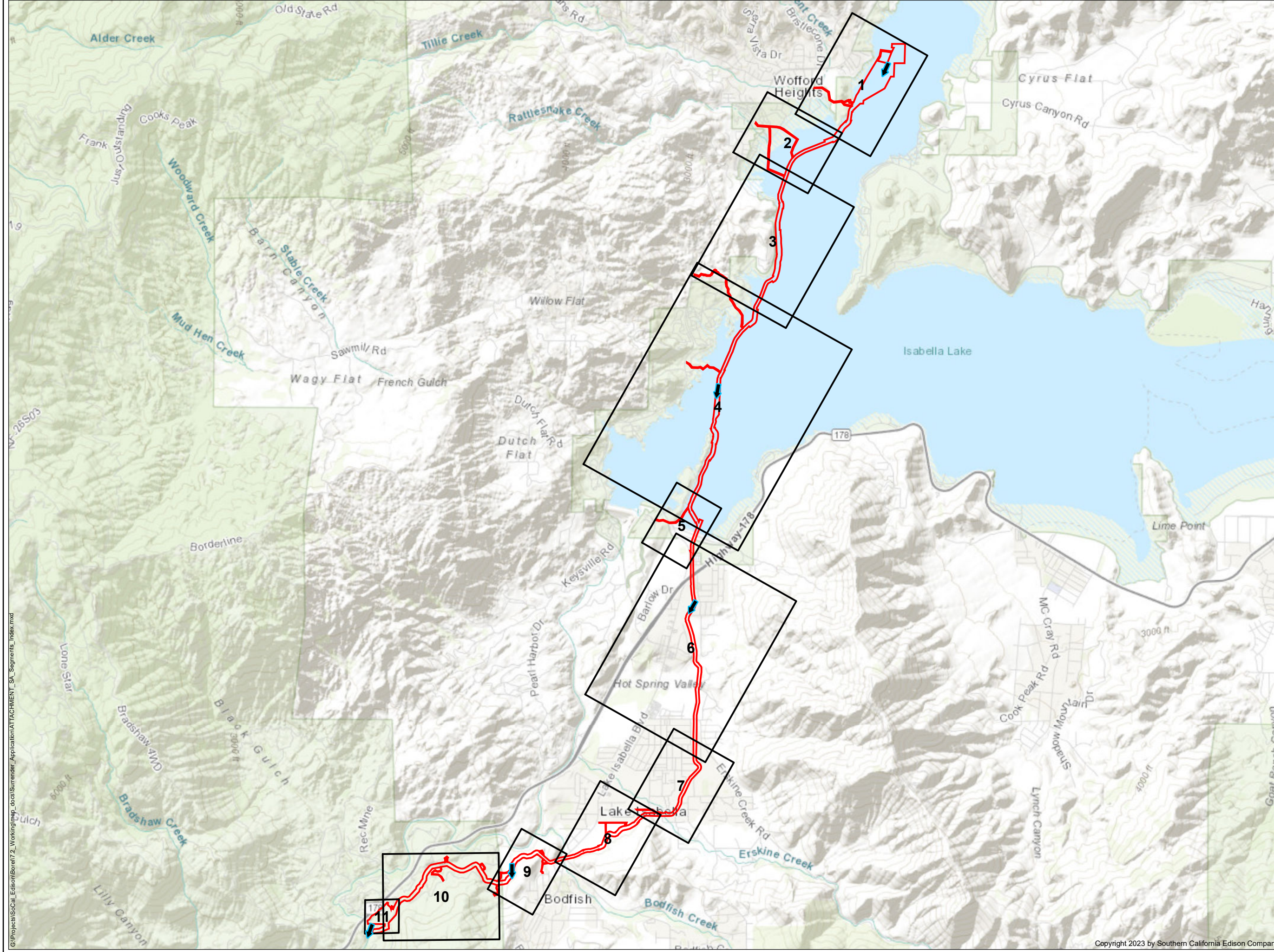





## **Appendix B: Borel Project Segment Map Set**

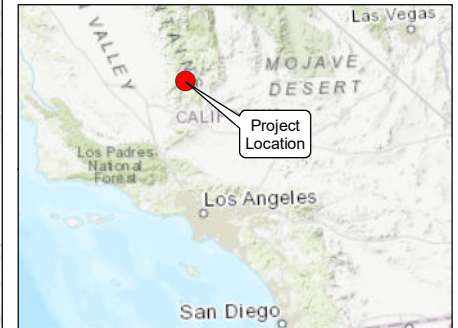
PAGE INTENTIONALLY LEFT BLANK



**LEGEND**

-  FERC Project Boundary #382
-  Map Page Extent
-  Flow Direction

\*SOURCE: HDR (2021), SoCal Edison (2021).



**DECOMMISSIONING  
PLAN SEGMENTS**

**OVERVIEW**

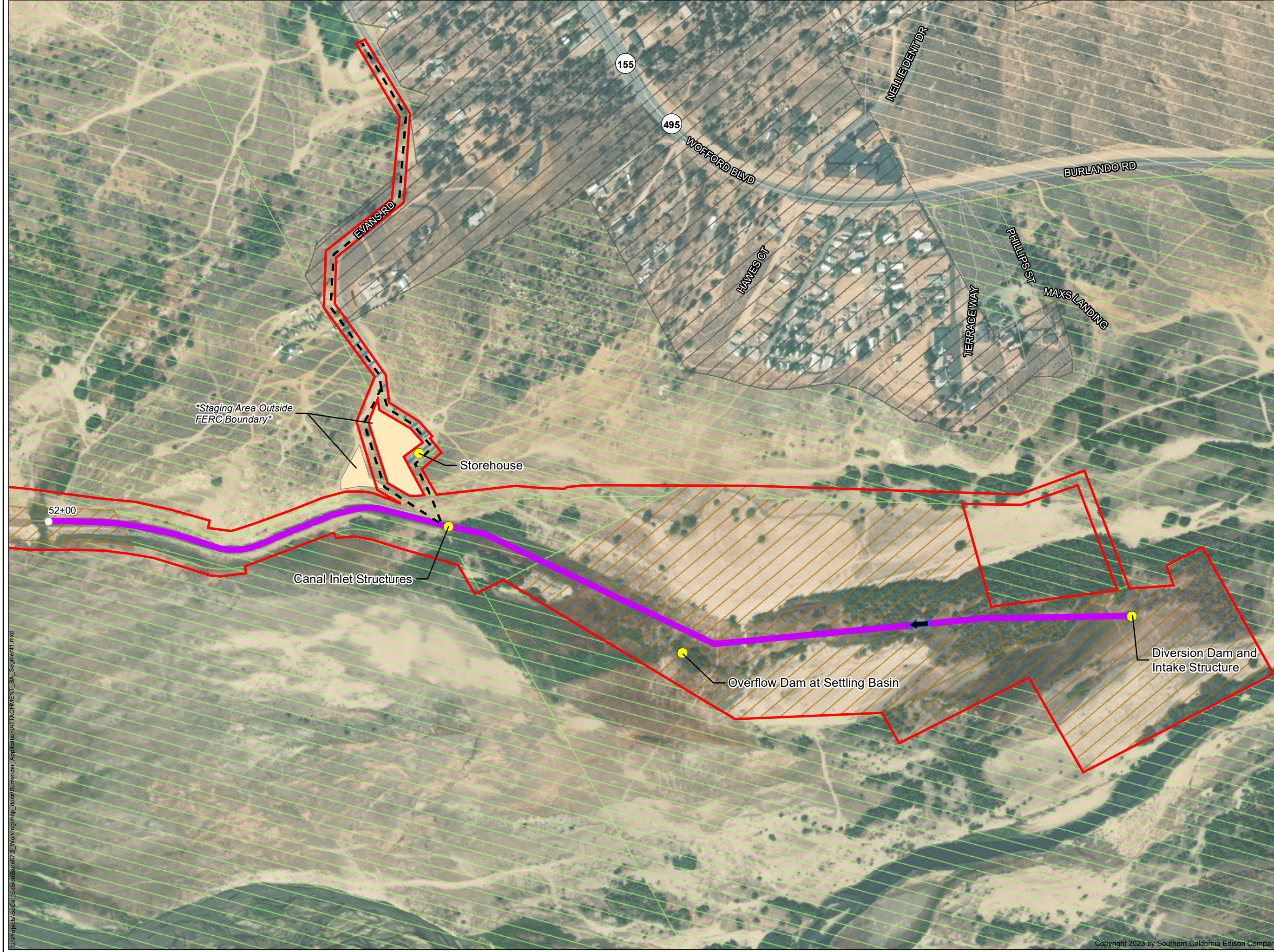
BOREL HYDROELECTRIC LICENSE SURRENDER PROJECT



Date: 3/30/2023

Southern California Edison (SCE) has no reason to believe that there are any inaccuracies or defects with information incorporated in this work and make no representations of any kind, including, but not limited to, the warranties of merchantability or fitness for a particular use, nor are any such warranties to be implied, with respect to the information or data, furnished herein. No part of this map may be reproduced or transmitted in any form or by any means, electronic or mechanical, including photocopying and recording system, except as expressly permitted in writing by SCE.

G:\Projects\SoCal\_Edison\Borel\2\_Working\map\_docs\Surrender\_Application\ATTACHMENT\_SA\_Segments\_Indbx.mxd



**LEGEND**

- FERC No. 382 Project Boundary
- ↑ Flow Direction
- Segment 1
- Project Feature

**Decommissioning Access & Staging**

- Access Road
- Staging Area

**Land Ownership**

- BLM
- Kern County
- Private
- SCE
- Sequoia National Forest
- Corps

\*Staging Area Outside FERC Boundary\*

Storehouse

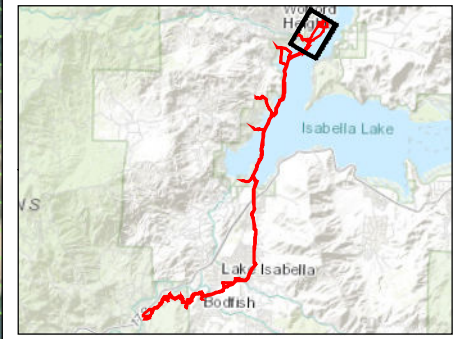
Canal Inlet Structures

Overflow Dam at Settling Basin

Diversion Dam and Intake Structure

Page 1 of 11

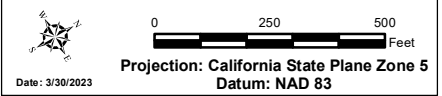
\*SOURCE: HDR (2022), SoCal Edison (2021).



**SEGMENT #1**

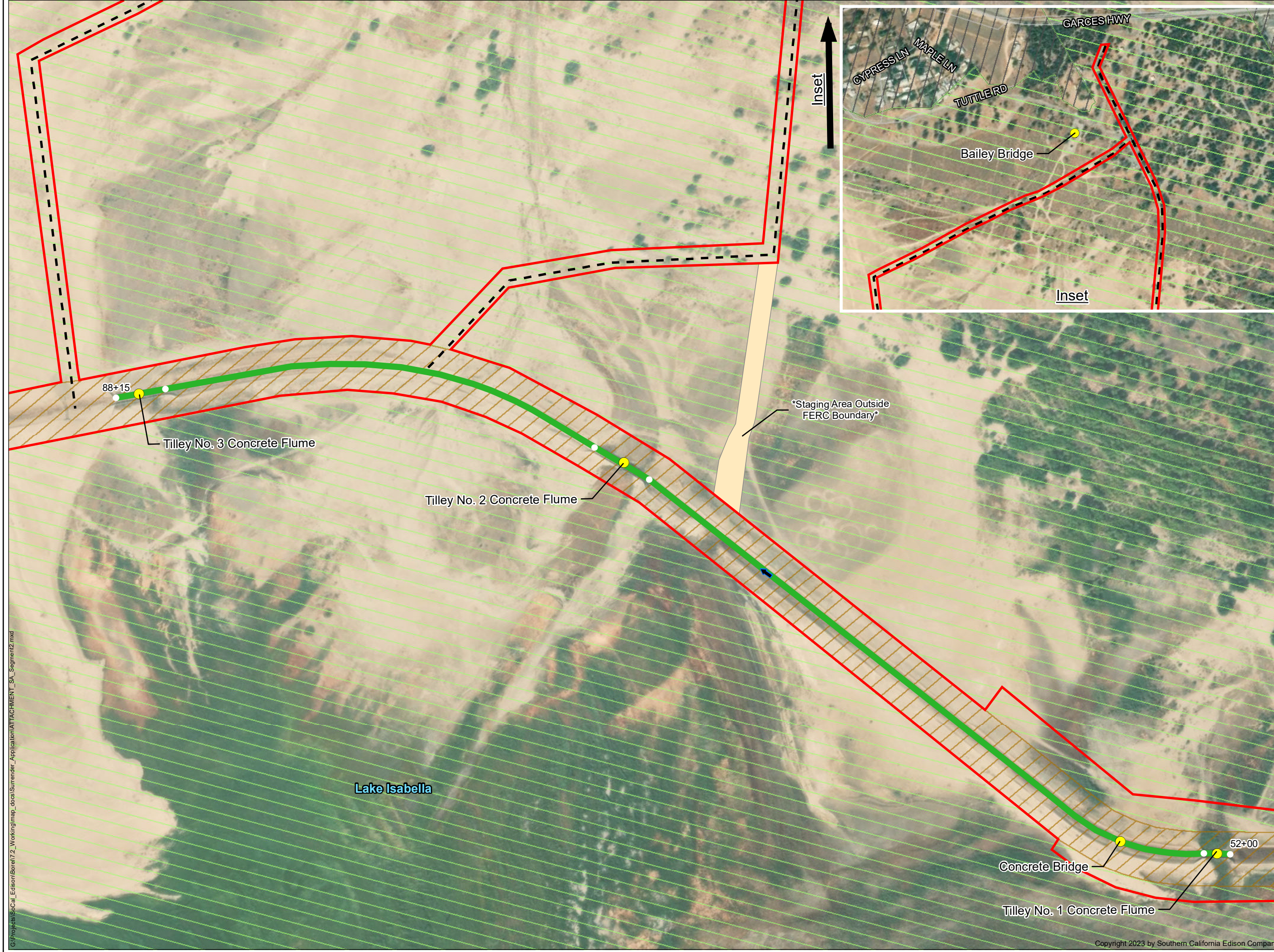
**DIVERSION DAM AND INTAKE STRUCTURE TO TILLEY NO. 1 CONCRETE FLUME**

BOREL HYDROELECTRIC PROJECT  
FERC PROJECT NO. 382



Southern California Edison (SCE) has no reason to believe that there are any inaccuracies or defects with information incorporated in this work and make no representations of any kind, including, but not limited to, the warranties of merchantability or fitness for a particular use, nor are any such warranties implied, with respect to the information or data, furnished herein. No part of this map may be reproduced or transmitted in any form or by any means, electronic or mechanical, including photocopying and recording system, except as expressly permitted in writing by SCE.

G:\Projects\SoCal Edison\Borel\2\_Working\map\_docs\Surrender\_Application\ATTACHMENT\_SA\_Segments1.mxd



### LEGEND

- FERC No. 382 Boundary
- ↑ Flow Direction
- Segment 2
- Project Feature

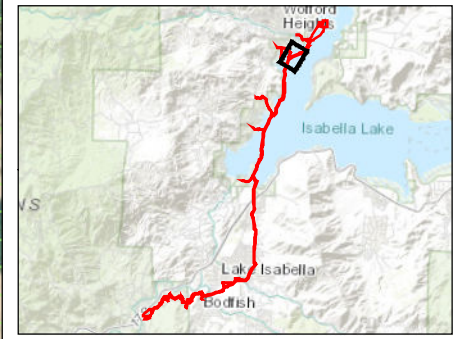
#### Decommissioning Access & Staging

- Access Road
- Staging Area

#### Land Ownership

- SCE
- Sequoia National Forest

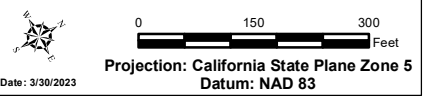
\*SOURCE: HDR (2022), SoCal Edison (2021).



## SEGMENT #2

### TILLEY NO. 1 CONCRETE FLUME TO TILLEY NO. 3 CONCRETE FLUME

BOREL HYDROELECTRIC PROJECT  
FERC PROJECT NO. 382



Southern California Edison (SCE) has no reason to believe that there are any inaccuracies or defects with information incorporated in this work and make no representations of any kind, including, but not limited to, the warranties of merchantability or fitness for a particular use, nor are any such warranties implied, with respect to the information or data, furnished herein. No part of this map may be reproduced or transmitted in any form or by any means, electronic or mechanical, including photocopying and recording system, except as expressly permitted in writing by SCE.

G:\Projects\SoCal\_Edison\Borel\2\_Working\map\_docs\Surrender\_Application\ATTACHMENT\_SA\_Segment2.mxd



**LEGEND**

- FERC Project Boundary #382
- ↑ Flow Direction
- Segment 3
- Project Feature
- Non-Project Feature

**Decommissioning Access & Staging**

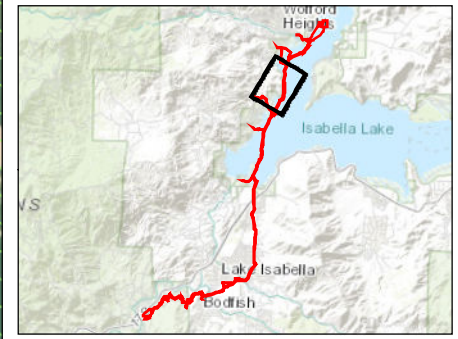
- Access Road
- Staging Area

**Land Ownership**

- Private
- SCE
- Sequoia National Forest

Page 3 of 11

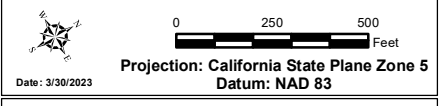
\*SOURCE: HDR (2022), SoCal Edison (2021).



**SEGMENT #3**

**TILLEY NO. 3 CONCRETE FLUME TO END OF SCE LAND**

BOREL HYDROELECTRIC PROJECT  
FERC PROJECT NO. 382



Southern California Edison (SCE) has no reason to believe that there are any inaccuracies or defects with information incorporated in this work and make no representations of any kind, including, but not limited to, the warranties of merchantability or fitness for a particular use, nor are any such warranties implied, with respect to the information or data, furnished herein. No part of this map may be reproduced or transmitted in any form or by any means, electronic or mechanical, including photocopying and recording system, except as expressly permitted in writing by SCE.

G:\Projects\SoCal\_Edison\Borel\2\_Working\map\_dca\Surrender\_Application\ATTACHMENT\_SA\_Segment3.mxd



**LEGEND**

- FERC No. 382 Boundary
- Flow Direction
- Segment 4
- Project Feature
- Non-Project Feature

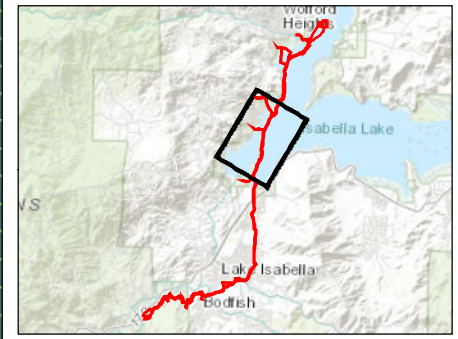
**Decommissioning Access & Staging**

- Access Road
- Staging Area

**Land Ownership**

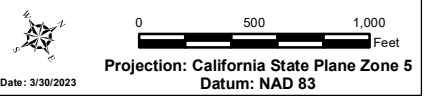
- BLM
- Private
- SCE
- Sequoia National Forest
- USACE

\*SOURCE: HDR (2022), SoCal Edison (2021).



**SEGMENT #4**  
**END OF SCE LAND TO**  
**AUXILLARY DAM**

BOREL HYDROELECTRIC PROJECT  
 FERC PROJECT NO. 382



Southern California Edison (SCE) has no reason to believe that there are any inaccuracies or defects with information incorporated in this work and make no representations of any kind, including, but not limited to, the warranties of merchantability or fitness for a particular use, nor are any such warranties implied, with respect to the information or data, furnished herein. No part of this map may be reproduced or transmitted in any form or by any means, electronic or mechanical, including photocopying and recording system, except as expressly permitted in writing by SCE.

G:\Projects\SoCal\_Edison\Borel\2\_Working\map\_docs\Surrender\_Application\DATA\ACHMENT\_SA\_4\segment4.mxd



**LEGEND**

- FERC Project Boundary #382
- Flow Direction
- Segment 5
- Non-Project Feature

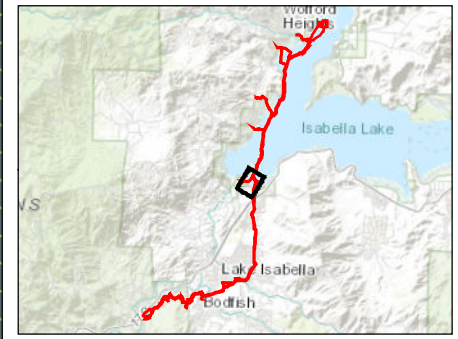
**Decommissioning Access & Staging**

- Access Road

**Land Ownership**

- Private
- SCE
- Sequoia National Forest
- USACE

\*SOURCE: HDR (2022), SoCal Edison (2021).



**SEGMENT #5**  
**AUXILLARY DAM**

BOREL HYDROELECTRIC PROJECT  
FERC PROJECT NO. 382

**Projection: California State Plane Zone 5**  
**Datum: NAD 83**

Southern California Edison (SCE) has no reason to believe that there are any inaccuracies or defects with information incorporated in this work and make no representations of any kind, including, but not limited to, the warranties of merchantability or fitness for a particular use, nor are any such warranties implied, with respect to the information or data, furnished herein. No part of this map may be reproduced or transmitted in any form or by any means, electronic or mechanical, including photocopying and recording system, except as expressly permitted in writing by SCE.

G:\Projects\SoCal Edison\Borel\2\_Working\map\_docs\Surrender\_Application\ATTACHMENT\_SA\_Segments.mxd





**LEGEND**

- FERC Project Boundary #382
- ↑ Flow Direction
- Segment 6
- Project Feature
- Non-Project Feature

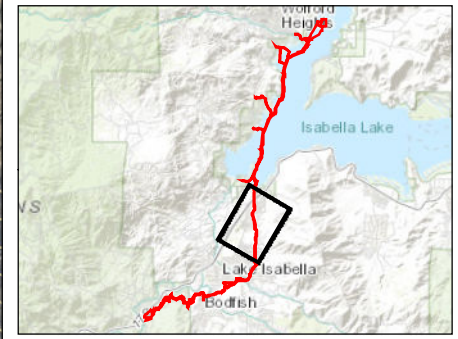
**Decommissioning Access & Staging**

- Staging Area

**Land Ownership**

- BLM
- Private
- SCE
- Sequoia National Forest
- Corps

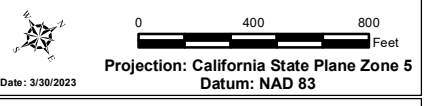
\*SOURCE: HDR (2022), SoCal Edison (2021).



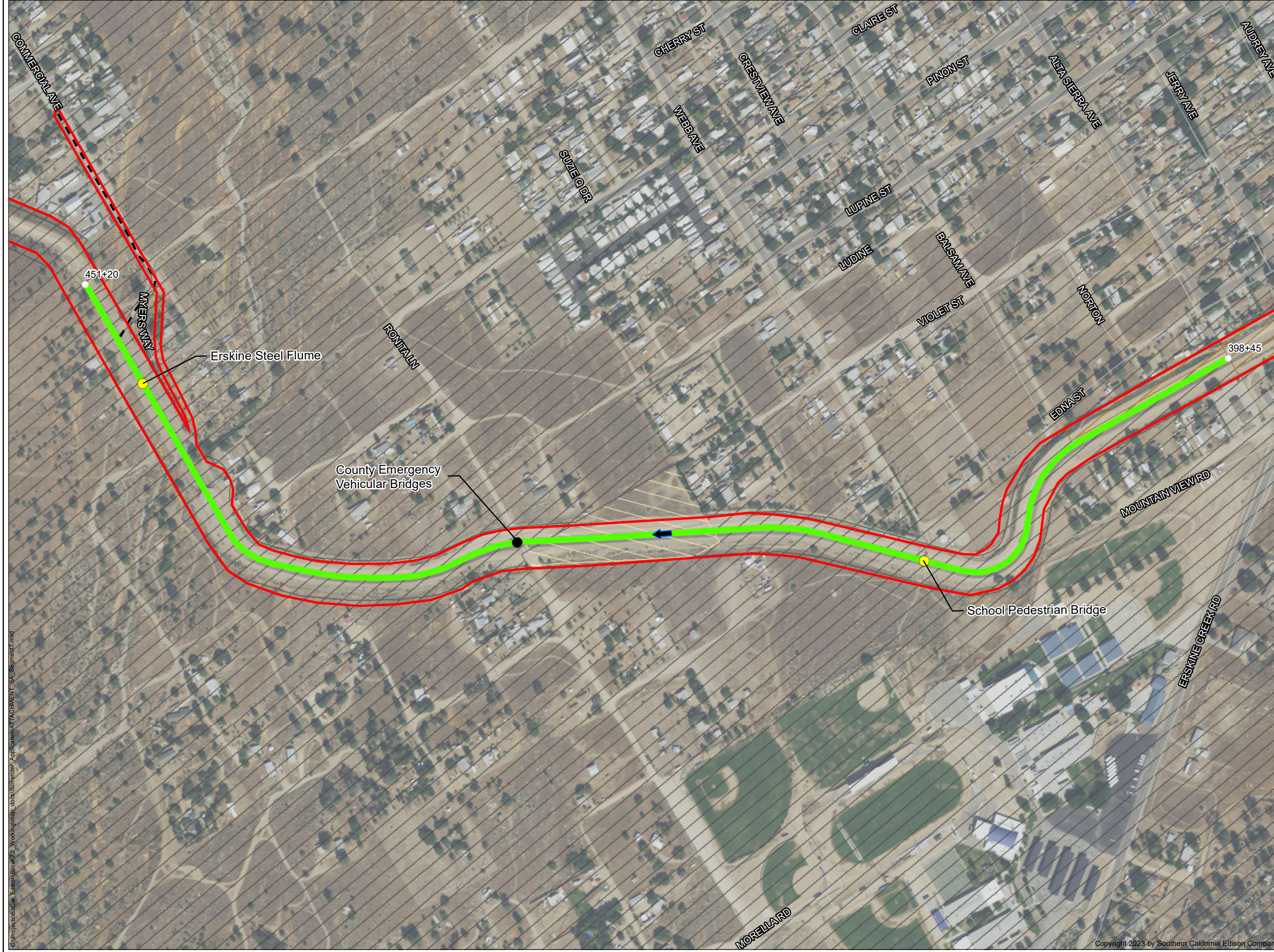
**SEGMENT #6**

**AUXILLARY DAM TO ALTA SIERRA AVENUE**

BOREL HYDROELECTRIC PROJECT  
FERC PROJECT NO. 382



Southern California Edison (SCE) has no reason to believe that there are any inaccuracies or defects with information incorporated in this work and make no representations of any kind, including, but not limited to, the warranties of merchantability or fitness for a particular use, nor are any such warranties implied, with respect to the information or data, furnished herein. No part of this map may be reproduced or transmitted in any form or by any means, electronic or mechanical, including photocopying and recording system, except as expressly permitted in writing by SCE.



**LEGEND**

- FERC Project Boundary #382
- ↑ Flow Direction
- Segment 7
- Project Feature
- Non-Project Feature

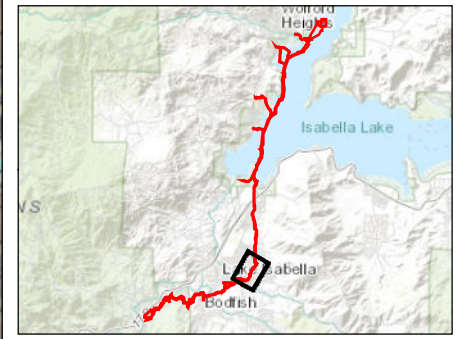
**Decommissioning Access & Staging**

- Access Road

**Land Ownership**

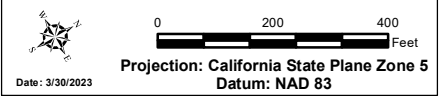
- BLM
- Private
- SCE

\*SOURCE: HDR (2022), SoCal Edison (2021).



**SEGMENT #7**  
**ALTA SIERRA AVENUE TO**  
**ERSKINE STEEL FLUME**

BOREL HYDROELECTRIC PROJECT  
 FERC PROJECT NO. 382



Southern California Edison (SCE) has no reason to believe that there are any inaccuracies or defects with information incorporated in this work and make no representations of any kind, including, but not limited to, the warranties of merchantability or fitness for a particular use, nor are any such warranties implied, with respect to the information or data, furnished herein. No part of this map may be reproduced or transmitted in any form or by any means, electronic or mechanical, including photocopying and recording system, except as expressly permitted in writing by SCE.

G:\Projects\SoCal\_Edison\Borel\22\_Working\map\_docs\Surrender\_Application\ATTACHMENT\_SA\_Segment7.mxd



**LEGEND**

- FERC Project Boundary #382
- ↑ Flow Direction
- Segment 8
- Project Feature

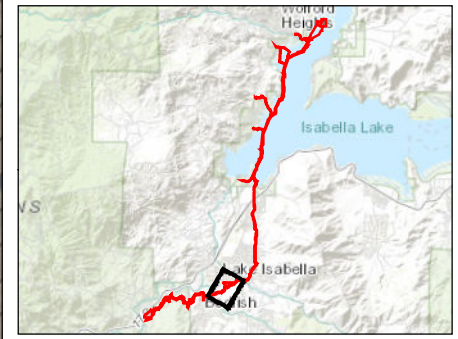
**Decommissioning Access & Staging**

- Access Road

**Land Ownership**

- BLM
- Private
- SCE

\*SOURCE: HDR (2022), SoCal Edison (2021).



**SEGMENT #8**

**ERSKINE STEEL FLUME TO BODFISH SIPHON**

BOREL HYDROELECTRIC PROJECT  
FERC PROJECT NO. 382

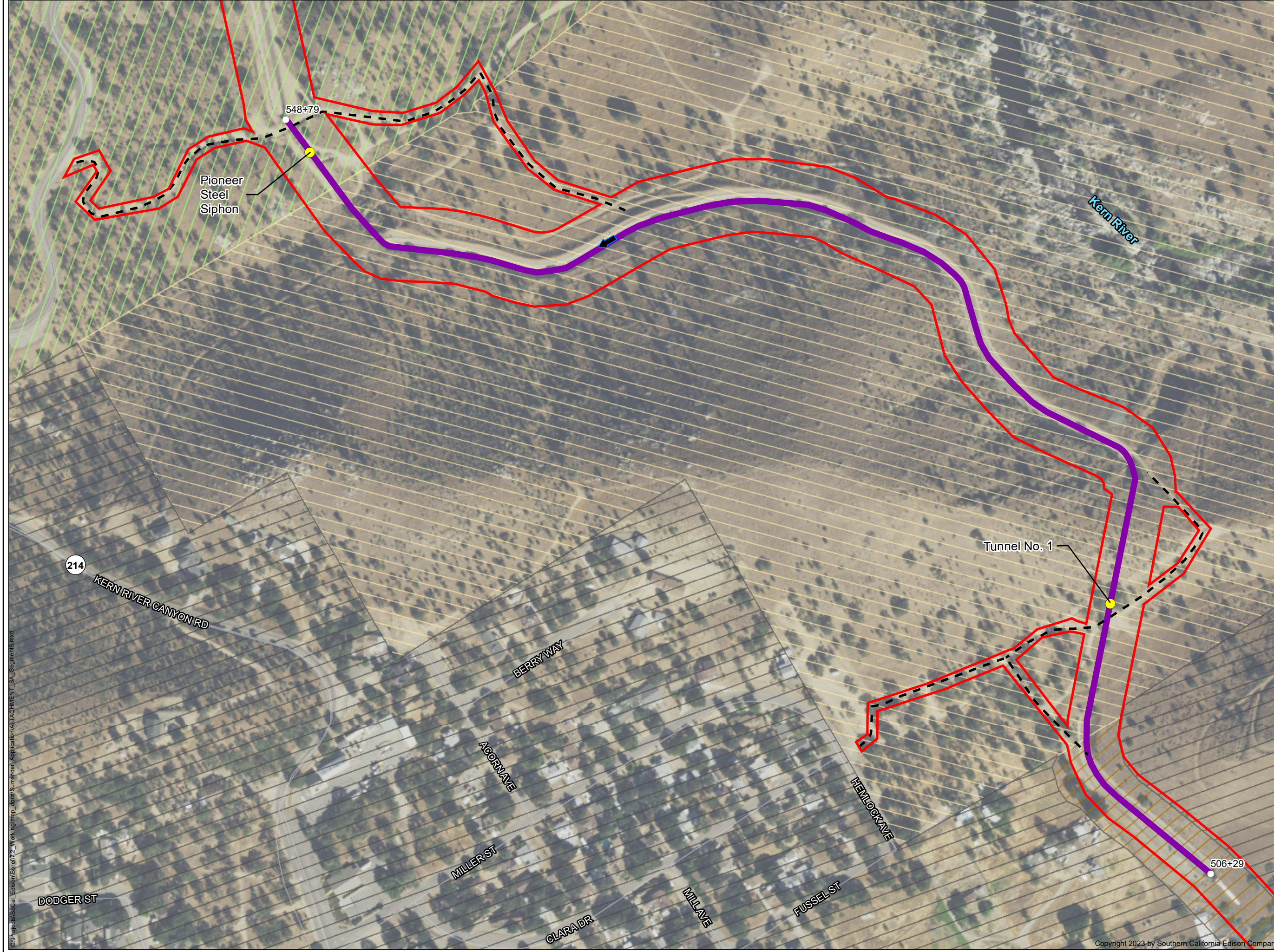
0      200      400  
Feet

**Projection: California State Plane Zone 5**  
**Datum: NAD 83**

Date: 3/30/2023

Southern California Edison (SCE) has no reason to believe that there are any inaccuracies or defects with information incorporated in this work and make no representations of any kind, including, but not limited to, the warranties of merchantability or fitness for a particular use, nor are any such warranties implied, with respect to the information or data, furnished herein. No part of this map may be reproduced or transmitted in any form or by any means, electronic or mechanical, including photocopying and recording system, except as expressly permitted in writing by SCE.

G:\Projects\SoCal\_Edison\Borel\12\_Working\map\_docs\Summary\_Application\ATTACHMENT\_SA\_Segments8.mxd



**LEGEND**

- FERC Project Boundary #382
- ↑ Flow Direction
- Segment 9
- Project Feature

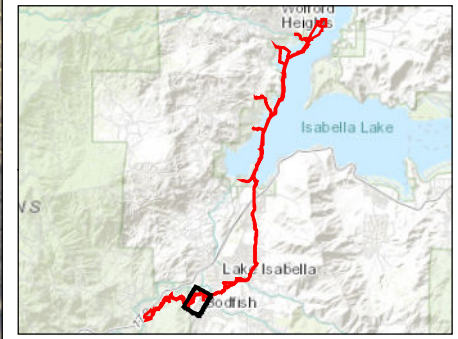
**Decommissioning Access & Staging**

- Access Road

**Land Ownership**

- BLM
- Private
- SCE
- Sequoia National Forest

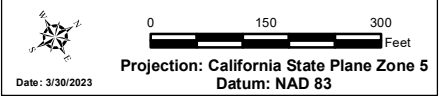
\*SOURCE: HDR (2022), SoCal Edison (2021).



**SEGMENT #9**

**BODFISH SIPHON TO PIONEER STEEL SIPHON**

BOREL HYDROELECTRIC PROJECT  
FERC PROJECT NO. 382



Date: 3/30/2023

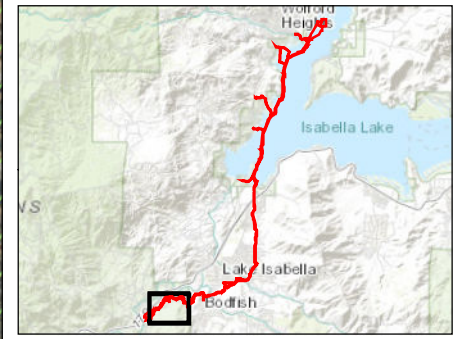
Southern California Edison (SCE) has no reason to believe that there are any inaccuracies or defects with information incorporated in this work and make no representations of any kind, including, but not limited to, the warranties of merchantability or fitness for a particular use, nor are any such warranties to be implied, with respect to the information or data, furnished herein. No part of this map may be reproduced or transmitted in any form or by any means, electronic or mechanical, including photocopying and recording system, except as expressly permitted in writing by SCE.

G:\Projects\SoCal Edison\Borel\YZ\_Working\map\_docs\Surrender\_Application\ATTACHMENT\_SA\_Segments\mxd



- LEGEND**
- FERC Project Boundary #382
  - ↑ Flow Direction
  - Segment 10
  - Project Feature
- Decommissioning Access & Staging**
- Access Road
  - Staging Area
- Land Ownership**
- Sequoia National Forest

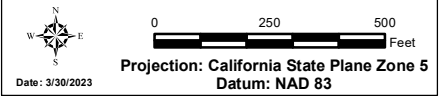
\*SOURCE: HDR (2022), SoCal Edison (2021).



**SEGMENT #10**

**PIONEER STEEL SIPHON TO FOREBAY STRUCTURE**

BOREL HYDROELECTRIC PROJECT  
FERC PROJECT NO. 382

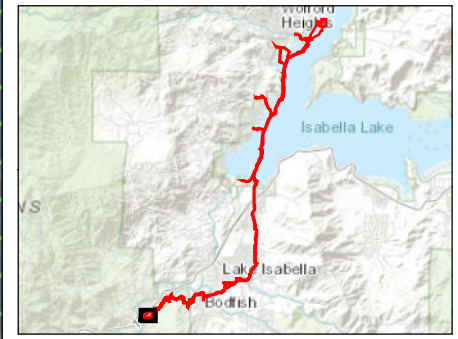


Southern California Edison (SCE) has no reason to believe that there are any inaccuracies or defects with information incorporated in this work and make no representations of any kind, including, but not limited to, the warranties of merchantability or fitness for a particular use, nor are any such warranties implied, with respect to the information or data, furnished herein. No part of this map may be reproduced or transmitted in any form or by any means, electronic or mechanical, including photocopying and recording system, except as expressly permitted in writing by SCE.



- LEGEND**
- FERC Project Boundary #382
  - ↑ Flow Direction
  - Segment 11
  - Project Feature
  - Non-Project Feature
- Decommissioning Access & Staging**
- Access Road
  - Staging Area
- Land Ownership**
- Sequoia National Forest

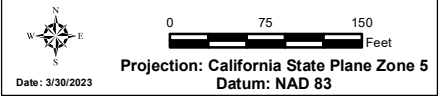
\*SOURCE: HDR (2022), SoCal Edison (2021).



**SEGMENT #11**

**FOREBAY STRUCTURE TO TAILRACE**

BOREL HYDROELECTRIC PROJECT  
FERC PROJECT NO. 382



Southern California Edison (SCE) has no reason to believe that there are any inaccuracies or defects with information incorporated in this work and make no representations of any kind, including, but not limited to, the warranties of merchantability or fitness for a particular use, nor are any such warranties implied, with respect to the information or data, furnished herein. No part of this map may be reproduced or transmitted in any form or by any means, electronic or mechanical, including photocopying and recording system, except as expressly permitted in writing by SCE.

G:\Projects\SoCal\_Edison\Borel\2\_Working\map\_docs\Surrender\_Application\ATTACHMENT\_SA\_Segment11.mxd